

May 2016

[Campaign Preview](#)[HTML Source](#)[Plain-Text Email](#)[Details](#)[Ways to help nature this Spring](#)[View this email in your browser](#)

Pollinator Partnership

Invite pollinators to your land by planting a pollinator friendly habitat. This [website](#) will help you chose the right plants for your ecoregion. Treat yourself to Disneynature's [WINGS OF LIFE](#) to learn how the world's food supply depends on these threatened creatures.



It's not just the showy flowers that attract pollinators, most trees require cross pollination. While wind can do the job, [learn](#) about the advantages of insects and birds transporting pollen for trees. Among the best known insect-pollinated trees are apples, basswood, cherries, black locust, catalpa, horse chestnut, tulip tree, and the willows.

Two bills in VT Legislature, [H.539](#) and [H.861](#), are meant to address the decline in pollinator health and population seen in Vermont and throughout the country.

Will the Monarch Butterfly make it?

The good news is that the 2015-16 overwintering count increased by 3 times from last year. But are the numbers high enough for the population to recover? Read the most recent report and how you can help [HERE](#)



False Solomon's Seal
(*Maianthemum racemosum*)

Wild Sarsaparilla
(*Aralia nudicaulis*)

Red-spotted Purple
(*Limenitis arthemis*)

European Skipper
(*Thymelicus lincolni*)



Eastern Milkweed
Longhorn beetle
(*Tetraopes tetraophterus*)



Eastern Painted Turtle
(*Chrysemys picta*)



White Snakeroot
(*Ageratina altissima*)



bluestem goldenrod
(*Solidago caesia*)

Marsh/Billings/Rockefeller Nat'l Park May 21 - BioBlitz

BioBlitz teams up volunteers: families, students, teachers, to find & identify as many species of plants, animals, fungi, & other organisms as possible in one day. All observations will contribute to the Vermont Atlas of Life. Free! [MORE](#)

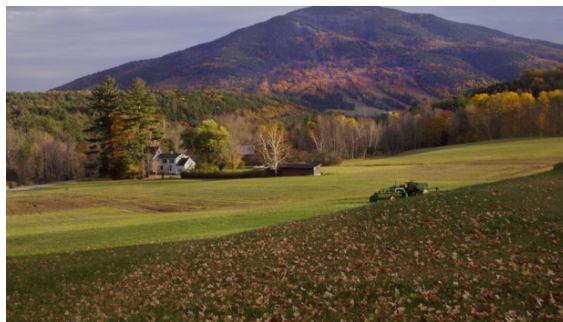


June 4 - Trek to Taste

Guided hikes from the Forest Center starting at 10:30 AM. Walkers of all ages are invited to trek to the park's horse shed meadow (.4 mile), the Nordic Hut (1 mile) and Mount Tom's South Peak Summit (2 miles). Local food, crafts, games. [MORE](#)

Mount Ascutney Outdoors May 31 - Mount Ascutney Inn

A summary of a study of the carrying capacity of the bike and hiking trails will be presented in the early evening. For more info - [CONTACT](#) Laura Stillson



How a Tree Trunk Sounds on a Record Player

A computer generated "record player" creates a piano concerto - [LISTEN](#)

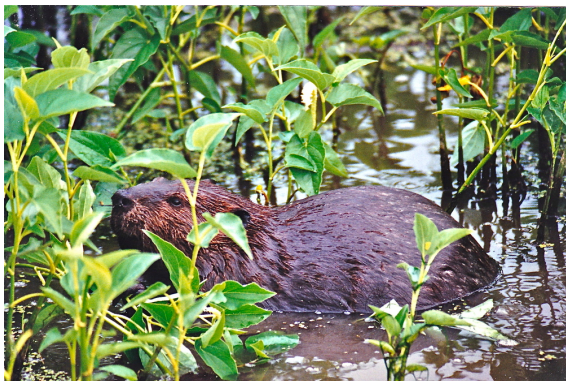
Do Required Agricultural Practices Apply to You ?

Farm size summary factsheet can be found [here](#):

Rule summary factsheet can be found [here](#):

May 26 on-line webinar - [here](#)





Beavers and Water Quality

Beaver dams can remove up to 45% of harmful nitrogen in streams. Read more [here](#).

Black River Action Team (BRAT)

LL Bean invited BRAT and Trout Unlimited to their Lebanon store to talk about how water quality projects help rivers and streams stay healthy for recreational use. For more info on BRAT - go [HERE](#)



Trees 4 Streams

Woodstock Union High School agricultural classes joined forces with VT Fish & Wildlife and ONRCD in the planting of 300 native trees and shrubs to protect the stream bank from future flooding erosion. Interested in this FREE program to protect streams? Contact [ONRCD](#)



DIY Compost Bins - [HERE](#)



Vertical Veggie Gardens - [HERE](#)

When planting your cats make sure to space them 6 inches apart so they have room to grow.



Eating Hostas? [Novelty Nibble](#)



Horse Manure Management - [HERE](#)



1 pound fiddleheads, cleaned
4 cups chicken or veg broth
1 cup heavy cream
3 tablespoons butter
1 sweet onion, chopped
1 teaspoon garlic powder
salt and pepper to taste

Steam fiddleheads until just tender. In a stock pot, melt butter & add onions. Season with garlic powder & add fiddleheads. (Reserve some for garnish) Saute until onions are softened & add broth. Reduce heat and simmer 30 minutes, or until fiddleheads are quite soft. Turn off heat, add cream, and puree using an immersion blender. Add salt and pepper to taste, and serve with steamed fiddlehead garnish.





Got (dog, cat, horse) hair? Put it in an old feeder for the birds to make nests with !



Easy tick [removal](#) !



Share



Tweet



Forward



HOW TO MAKE NETTLE PESTO

Learn how [HERE](#)



[Tree Bombs ???](#)



Copyright © 2016 Ottauquechee Natural Resources Conservation District, All rights reserved.

You are receiving this email because you attended one or more ONRCD workshops or meetings and gave us your e-mail address. We appreciate being able to use this form of communication rather than use paper which adds to the environment.

Our mailing address is:

Ottauquechee Natural Resources Conservation District
28 Farmvu Drive
White River Junction, Vermont 05001

[Add us to your address book](#)

Want to change how you receive these emails?

You can [update your preferences](#) or [unsubscribe from this list](#)

The MailChimp logo is displayed in a white, cursive script font, centered within a solid gray rectangular box.